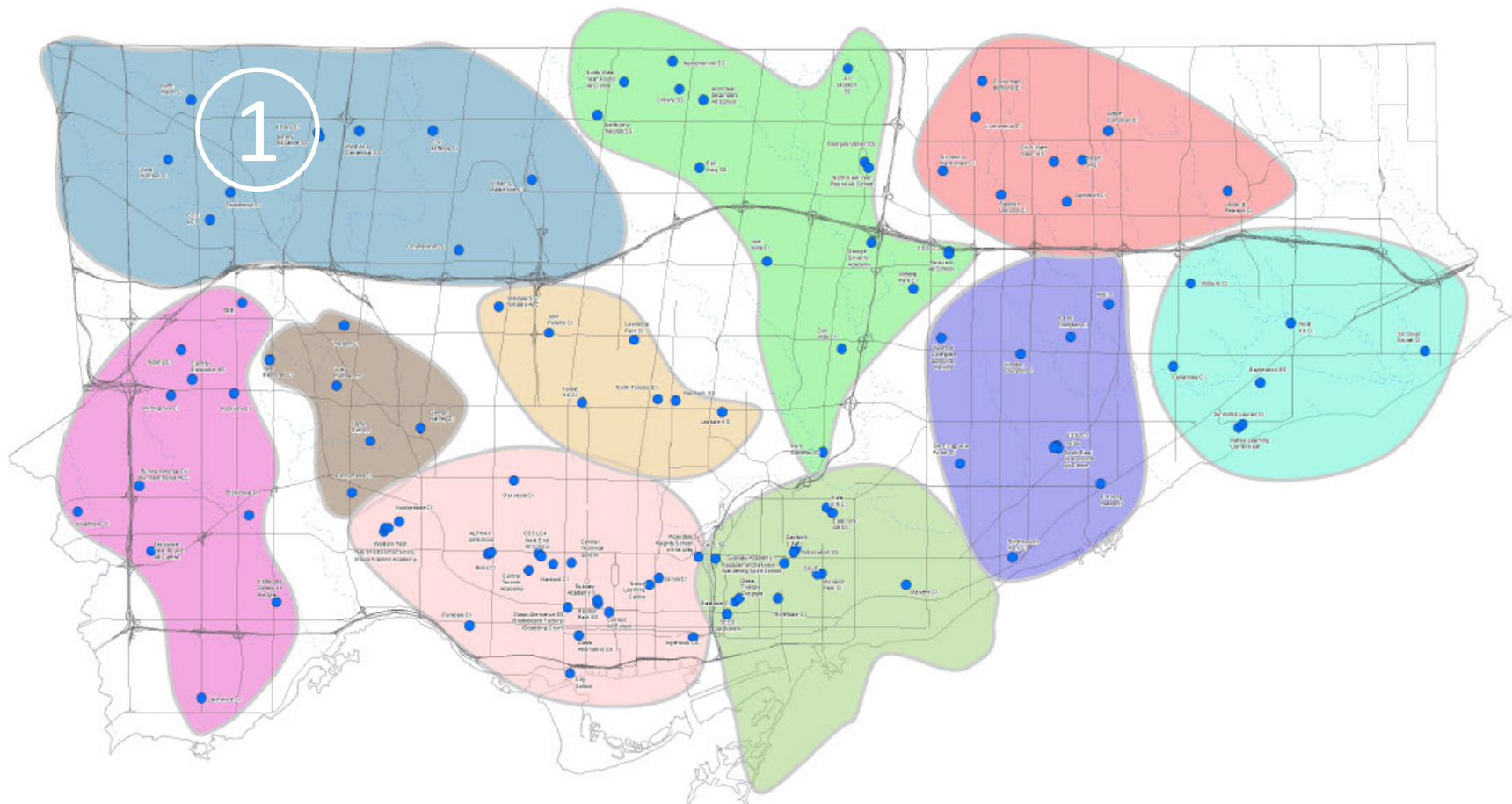


Looking Ahead 2029

Group 1

Appendix 4A



Looking Ahead 2029 - Group 1

List of Schools

Collegiates

- C W Jefferys Collegiate Institute
- Downsview Secondary School
- Emery Collegiate Institute
- North Albion Collegiate Institute
- Thistletown Collegiate Institute
- West Humber Collegiate Institute
- Westview Centennial Secondary School
- William Lyon Mackenzie Collegiate Institute

EdVance Programs

- Emery EdVance

Caring and Safe Schools

- Caring and Safe Schools – Learning Centre 1

Looking Ahead 2029 - Group 1

Key Facts

	2019	2029	Change
Total Enrolment	6,874	6,396	-478
Total Capacity	9,765	9,765	-
Surplus Space (Capacity - Enrolment)	2,891	3,369	478
Utilization Rate (Enrolment / Capacity)	70%	65%	-5%

Appendix 4A

Number of
Secondary Schools



Less than 65%
Utilization



Over 100%
Utilization



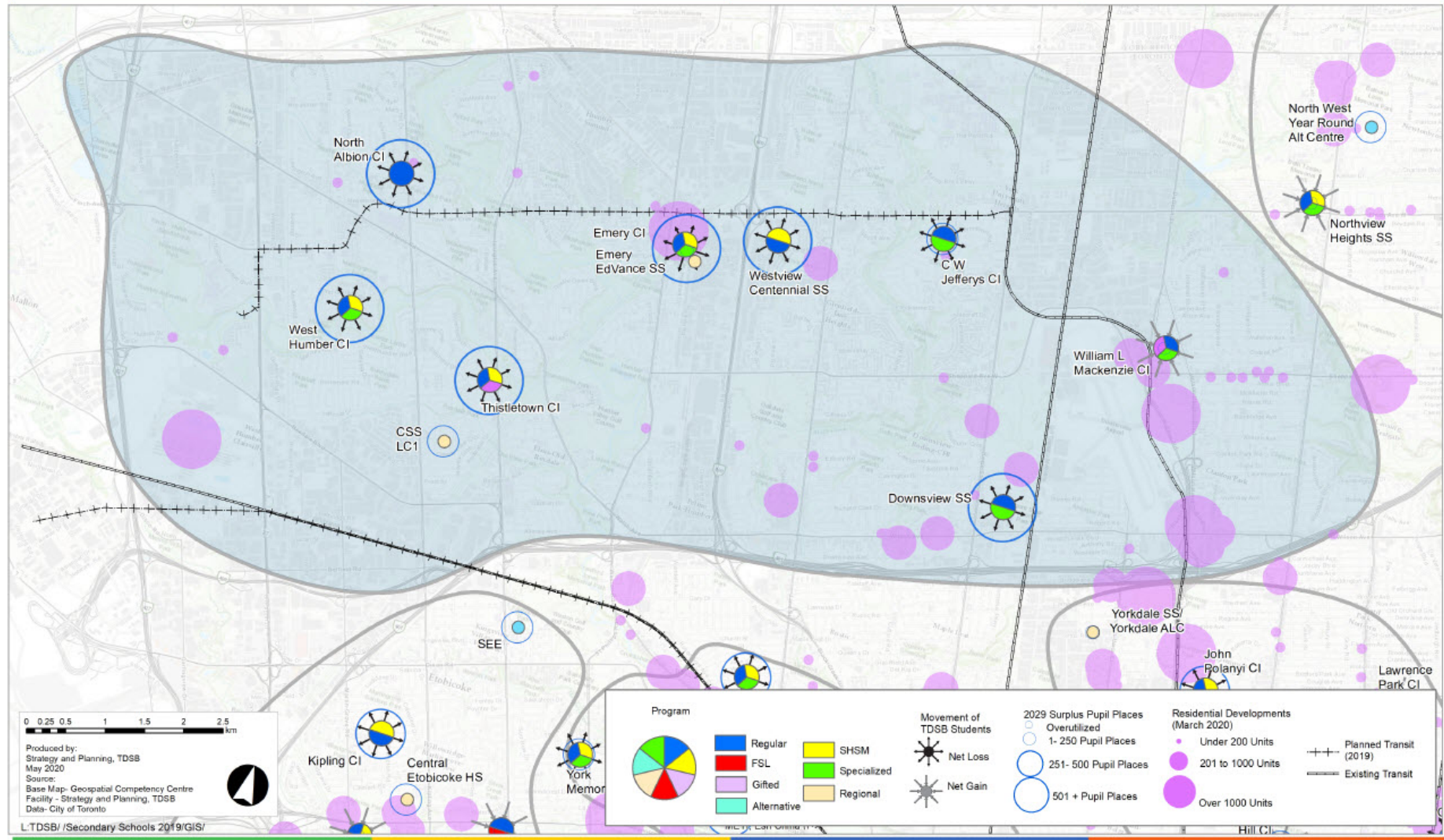
Looking Ahead 2029 - Group 1

Context Map



Toronto District School Board

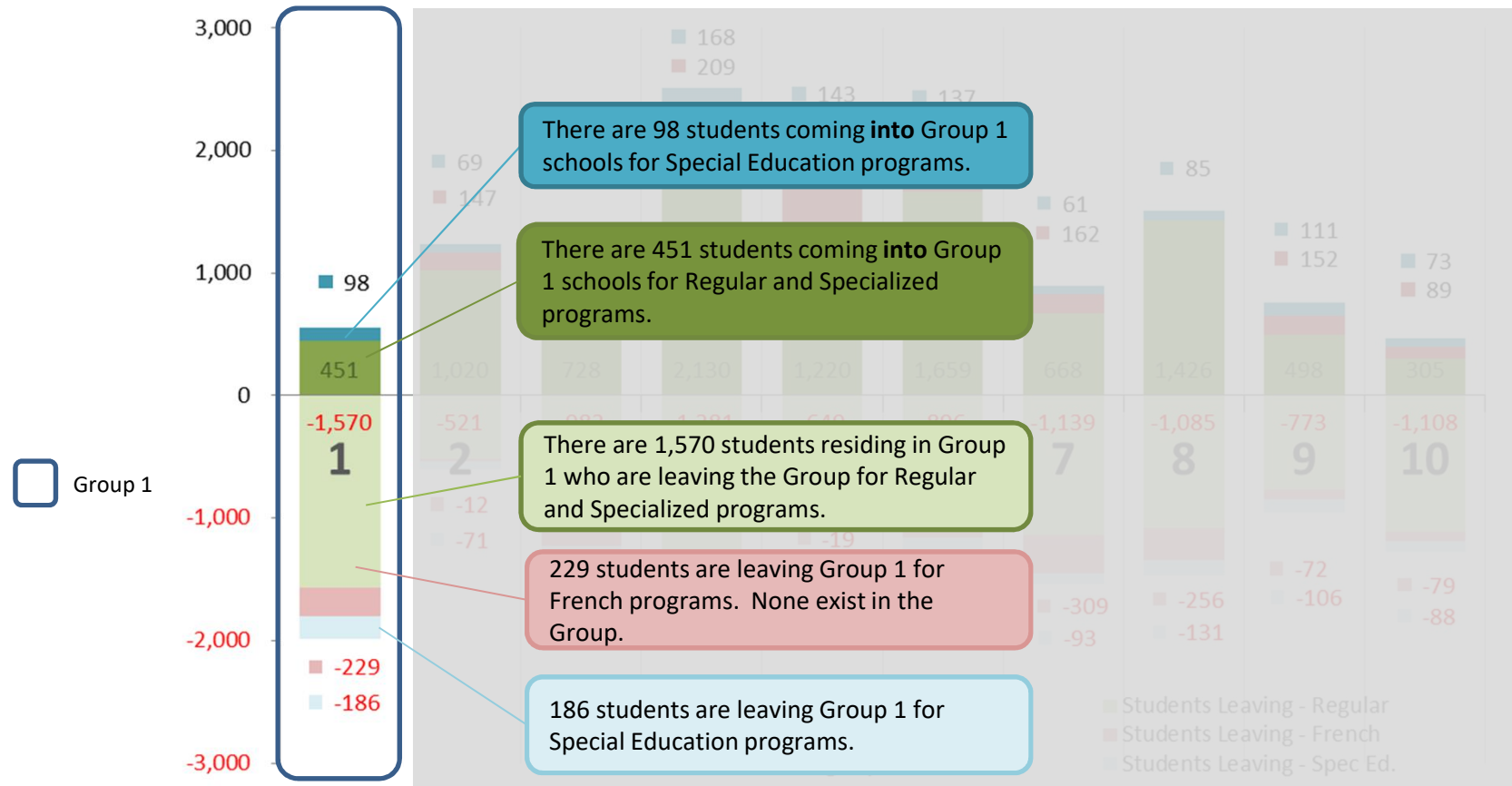
Secondary Program Review – Group 1



Looking Ahead 2029 - Group 1

Movement of Students

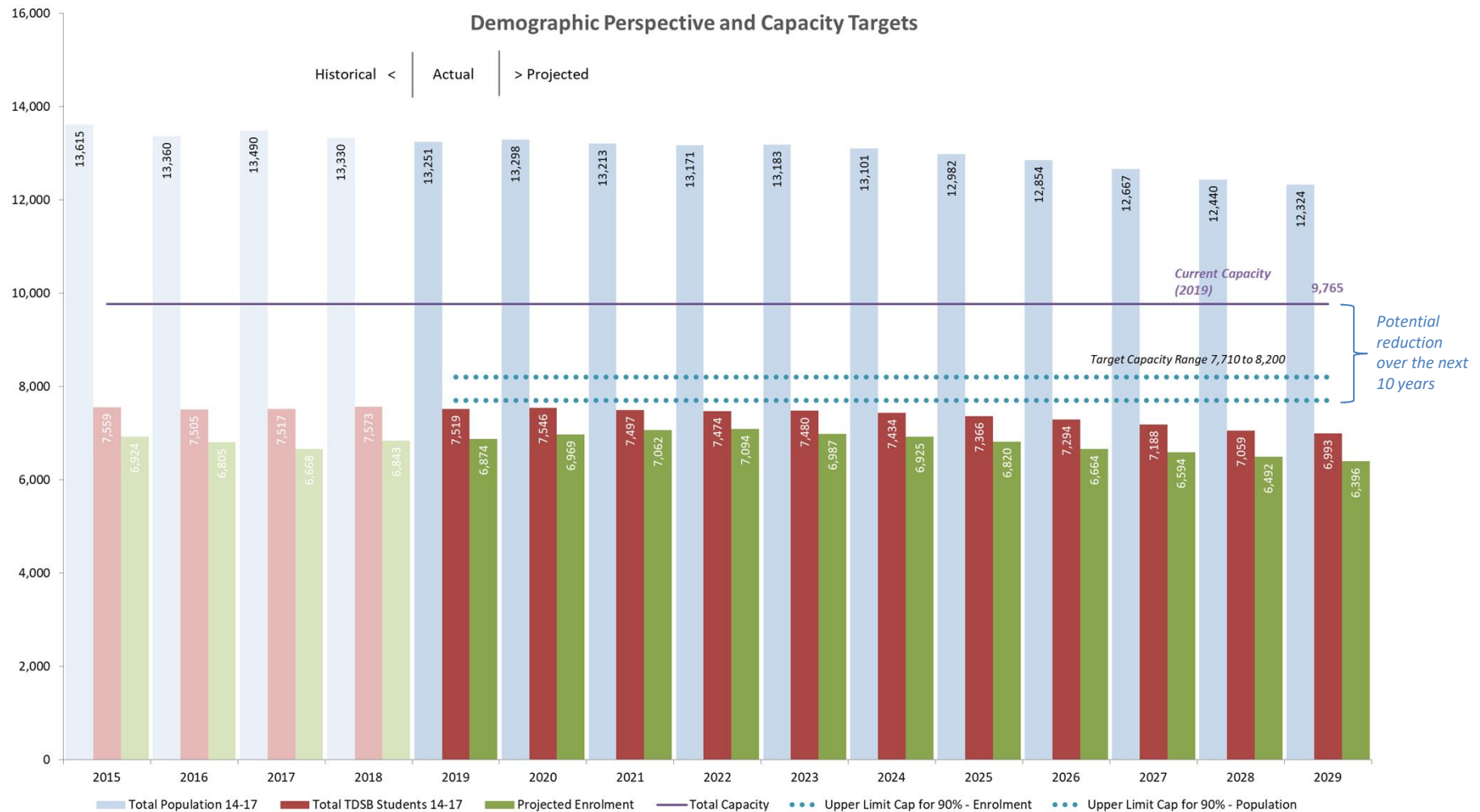
Movement of Students Between School Groups - 2019



- Large numbers of students residing in Group 1 are choosing to attend schools in other Groups for regular or specialized programs.
- There are 400+ students choosing to attend schools in Group 1 from outside of the group. This could be due to the specialized programs that exist at some schools.
- There are no French as a Second Language programs in Group 1; over 200 students are leaving to attend these programs elsewhere

Looking Ahead 2029 - Capacity Targets

Appendix 4A



- Target capacity range is between 7,700 and 8,200 pupil places.
- Opportunity to reduce surplus capacity by approximately 1,565 to 2,065 pupil places, or a potential reduction of up to two schools
- The target capacity range considers the peak enrolment in both the population (2020) and enrolment projections (2022). Given that both are anticipated to decline, additional capacity reductions could be considered over the long-term.
- There are currently over 2,891 surplus pupil places (2019), growing to 3,369 by 2029.

Roadmap to 2029 – List of Preliminary Concepts

- **Target a reduction of surplus capacity between 1,565 and 2,065 pupil places**
 - Future Pupil Accommodation Reviews to explore potential consolidations and reduce surplus capacity.
 - The guiding principles of the Long-Term Program & Accommodation Strategy will inform this work, specifically school size and utilization targets.
 - Secondary schools should be of a sufficient size that can support rich programming, pathways learning opportunities for all students.
- **French Immersion pathway to provide a local opportunity for students**
 - There are no programs in Group 1, resulting in students having to travel to schools outside of Group 1
 - Students considerable distances or are not continuing with French programs in secondary school.
- **Explore a dedicated Adult Learning Centre to support increasing demand**
 - The Board will continue to support Adult learners in environments that benefit all students.
- **Review existing Gifted programs, their current locations and viability**
 - There are two secondary Gifted programs within this group
- **Introduction of FAST programs to increase/expand offerings in Skills and Technology**
 - FAST programs are an opportunity to expand access for students who wish to pursue pathways in the skilled trades.
 - FAST programs will maximize the use of specialized spaces within schools, and align with Specialist High Skills Major (SHSM programs).
- **Review of Specialized Programming to increase access for local students**
 - Review of Optional Attendance data from 2019-20 to determine which programs students are applying to.
 - Determine how these programs may be replicated or better supported within Group 1 schools.
- **Reduction of Optional Attendance for regular programs outside of the Group**
 - Review Optional Attendance data from 2019-20 to determine what schools students are applying to fore regular programming.

School Inventory - Group 1

School Name	School Type	LOI (2017)	Current Situation							5 Years Out (2024)						10 Years Out (2029)					
			Actual Enrolment	Capacity	Util. Rate	Under Capacity	Over Capacity	% Underutilized	% Overutilized	Projected Enrolment	Util. Rate	Under Capacity	Over Capacity	% Underutilized	% Overutilized	Projected Enrolment	Util. Rate	Under Capacity	Over Capacity	% Underutilized	% Overutilized
C W Jefferys Collegiate Institute	Collegiate	11	821	984	83%	163				871	89%	113				951	97%	33			
Downsview Secondary School	Collegiate	3	641	1,320	49%	679				732	55%	588				656	50%	664			
Emery Collegiate Institute	Collegiate	18	588	1,428	41%	840				615	43%	813				673	47%	755			
North Albion Collegiate Institute	Collegiate	48	830	1,095	76%	265				702	64%	393				501	46%	594			
Thistletown Collegiate Institute	Collegiate	33	470	975	48%	505				502	51%	473				388	40%	587			
West Humber Collegiate Institute	Collegiate	46	1,049	1,248	84%	199				957	77%	291				713	57%	535			
Westview Centennial Secondary School	Collegiate	1	870	1,581	55%	711				837	53%	744				758	48%	823			
William Lyon Mackenzie Collegiate Institute	Collegiate	91	1,412	924	153%		-488			1,552	168%		-628			1,599	173%		-675		
Emery EdVance Secondary School	EdVance	6	192	84	229%		-108			151	180%		-67			151	180%		-67		
Caring and Safe School LC1	CSS	-	1	138	1%	137				6	4%	132				6	4%	132			

Collegiates and Technical-Commercial Schools - 2019 Enrolment Breakdown and Programs Offered

School Name	Regular Track	French Imm.	French Ext.	Special Education	Special Education Programs	Specialized Programs and Specialist High Skills Majors (SHSMs)
C W Jefferys Collegiate Institute	821					Visual Arts Focus Math and Science Focus
Downsview Secondary School	596			45	MID DD	Africentric Program
Emery Collegiate Institute	562			26	MID DD	SHSM - Transportation Cyber Studies
North Albion Collegiate Institute	827			3	LD	
Thistletown Collegiate Institute	448			22	Gifted Autism	SHSM - Arts and Culture SHSM - Hospitality and Tourism SHSM - Info/Comm. Tech
West Humber Collegiate Institute	1,016			33	MID DD	Math and Science Focus Advanced Placement SHSM - Info/Comm. Tech
Westview Centennial Secondary School	762			108	MID DD LD	SHSM - Arts and Culture SHSM - Construction SHSM - Health and Wellness SHSM - Transportation
William Lyon Mackenzie Collegiate Institute	1,239			173	Gifted	Math and Science Focus

Collegiates - Attendance Area Summary 2019: Attending Regular Track Locally

School Name	Total In-Area Students	Total Attending Local School (Reg. Track) and %
C W Jefferys Collegiate Institute	977	480 49%
Downsview Secondary School	915	451 49%
Emery Collegiate Institute	967	452 47%
North Albion Collegiate Institute	1,316	762 58%
Thistletown Collegiate Institute	623	266 43%
West Humber Collegiate Institute	1,144	708 62%
Westview Centennial Secondary School	1,571	693 44%
William Lyon Mackenzie Collegiate Institute	981	784 80%

Collegiates - Attending School Summary: Regular Program 2019

School Name	Total Enrol. Reg Track	Total In-District (Reg. Track) and %	Total Out of District (Reg. Track) and %
C W Jefferys Collegiate Institute	821	480 58%	341 42%
Downsview Secondary School	596	451 76%	145 24%
Emery Collegiate Institute	562	452 80%	110 20%
North Albion Collegiate Institute	827	762 92%	65 8%
Thistletown Collegiate Institute	448	266 59%	182 41%
West Humber Collegiate Institute	1,016	708 70%	308 30%
Westview Centennial Secondary School	762	693 91%	69 9%
William Lyon Mackenzie Collegiate Institute	1,239	784 63%	455 37%

