

SEAC Meeting

October 5, 2020



Land Acknowledgement

"We acknowledge we are hosted on the lands of the Mississaugas of the Anishinaabe, the Haudenosaunee Confederacy and the Wendat. We also recognise the enduring presence of all First Nations, Métis and Inuit peoples."



Agenda

1. Call to Order (quorum) - Land Acknowledgement and Welcome
2. Approval of Agenda (including time allocation)
3. Declarations of Possible Conflict of Interests and Approval of SEAC Minutes
4. Announcement of Interim Chair
5. Leadership and Learning Department Staff updates,
 - Virtual School
 - Budget
 - Facilities Update

Welcome to

Andrew Gold

*Interim Associate Director,
Leadership, Learning and School Improvement*

Leadership Report:

1. Special Education Virtual School Updates

- a. Financials-Craig Snider
- b. Health and Safety-Steve Shaw
- c. Data
- d. Staffing and Creating Classes
- e. Special Education Supports
- f. Sample timetable
- g. IEP / IST/SST
- h. SEAC Virtual School Discussion

2. CCAT 7

- a. SEAC Discussion


Enrolment and Class Size Information

Elementary Enrolment as of September 30, 2020

	In-Person	Virtual	Total
Actual	109,835	58,399	168,234
Projected	120,914	51,700	172,614
Difference	(11,080)	6,699	(4,381)

Projected Elementary Enrolment as of October 13, 2020

	In-Person	Virtual	Total
Actual	106,523	63,360	169,883
Projected	120,914	51,700	172,614
Difference	(14,392)	11,660	(2,732)



Enrolment and Class Size Information

Secondary Enrolment as of September 30, 2020

	In-Person	Virtual	Total
Actual	52,992	17,357	70,349
Projected	56,969	14,267	71,236
Difference	(3,978)	3,090	(887)

System Projected Enrolments as of September 30, 2020

	In-Person	Virtual	Total
Actual	159,514	80,717	240,231
Projected	177,883	65,967	243,850
Difference	(18,369)	14,750	(3,619)



Impact of Enrolment Changes

- 7,882 Students moved to virtual schools
- 2,921 Students moved to In-person schools
- If the projected enrolments of October 13 come in as planned, the financial impact to the GSN will be approximately \$40M
- Impact of changes to FSL enrolments not known at this time
- ESL enrolment in line with revised projections used for budget



Average Class Sizes

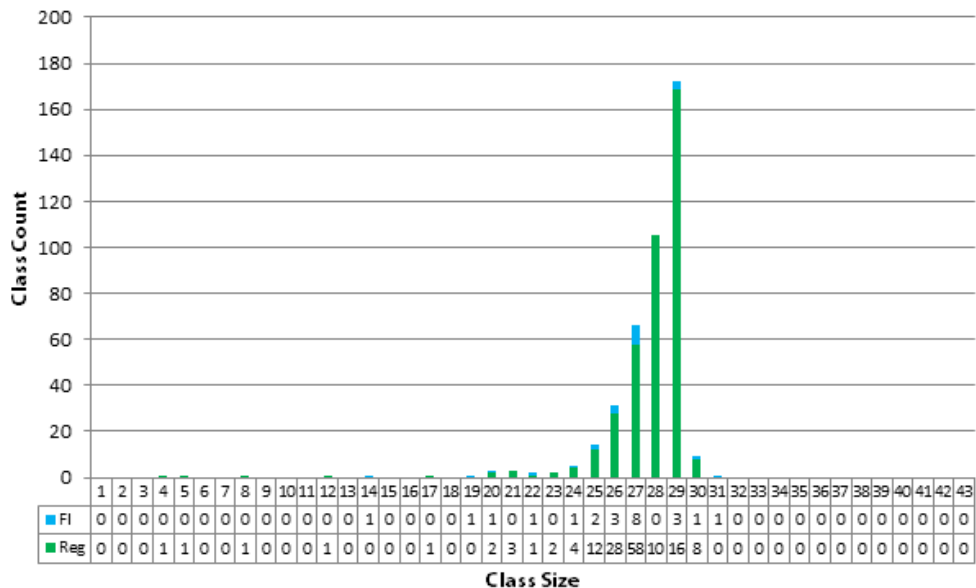
School	JK/SK	Grades 1 to 3	Grades 4 to 8
Virtual School	27.77	19.08	31.41
TDSB Identified High Priority Schools (based on TPH and other criteria)	10.91	14.99	13.81
All Other Schools	17.55	16.33	20.39

Please note these averages and graphics do not include Special Education classes.



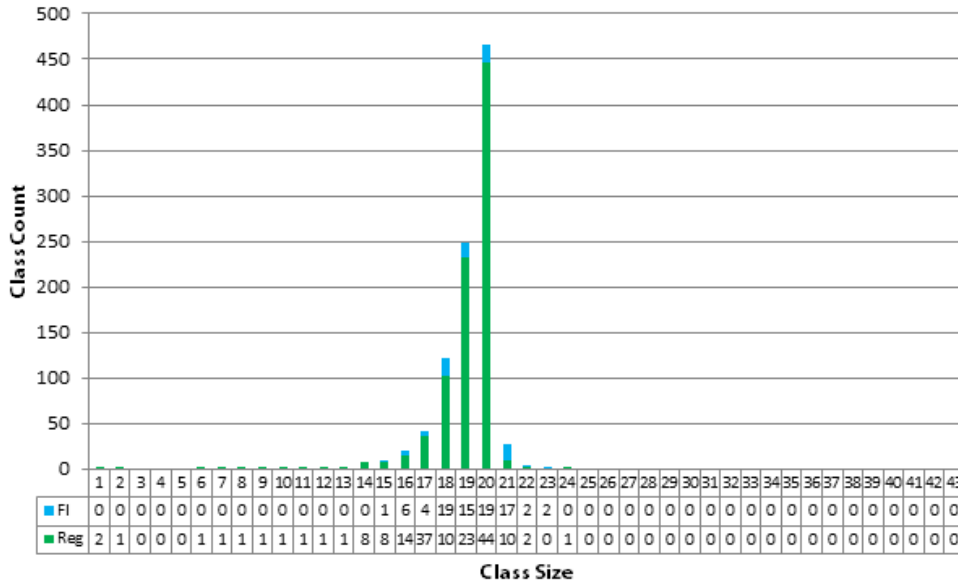
Virtual School

Count of Classes by Class Size - FDK -
October 2, 2020



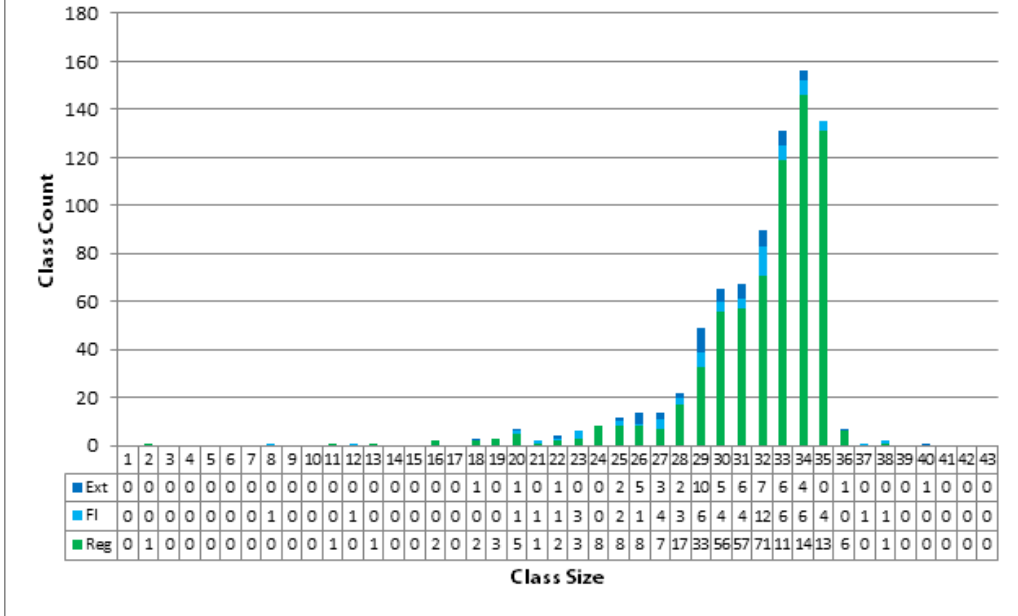
Virtual School

Count of Classes by Class Size - Gr 1-3 -
October 2, 2020*

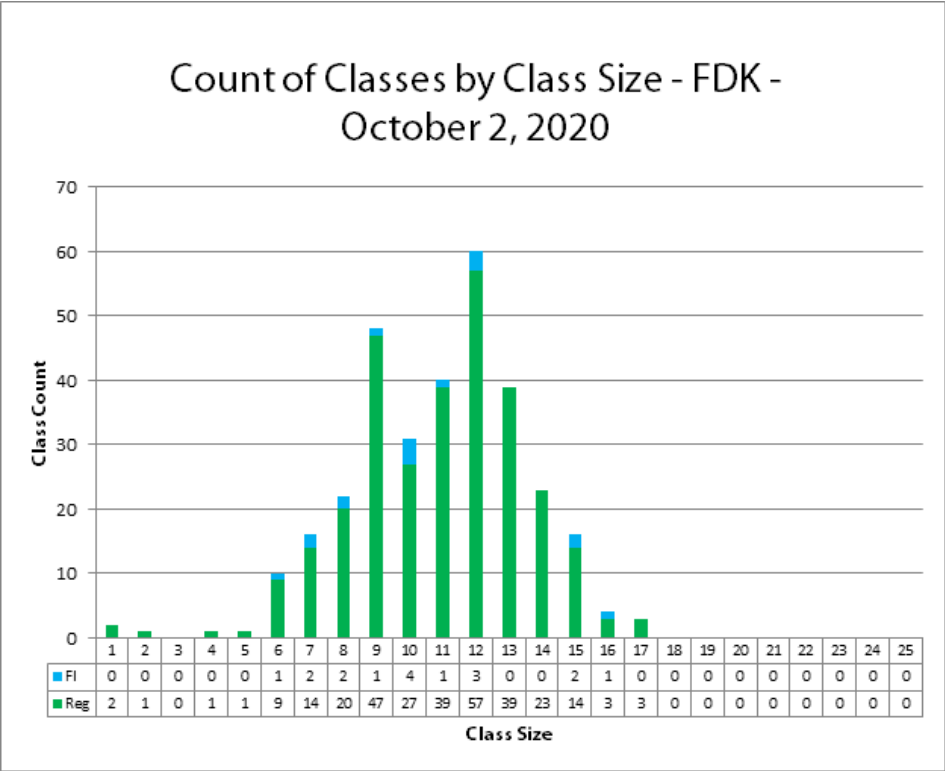


Virtual School

Count of Classes by Class Size - Gr 4-8 -
October 2, 2020*

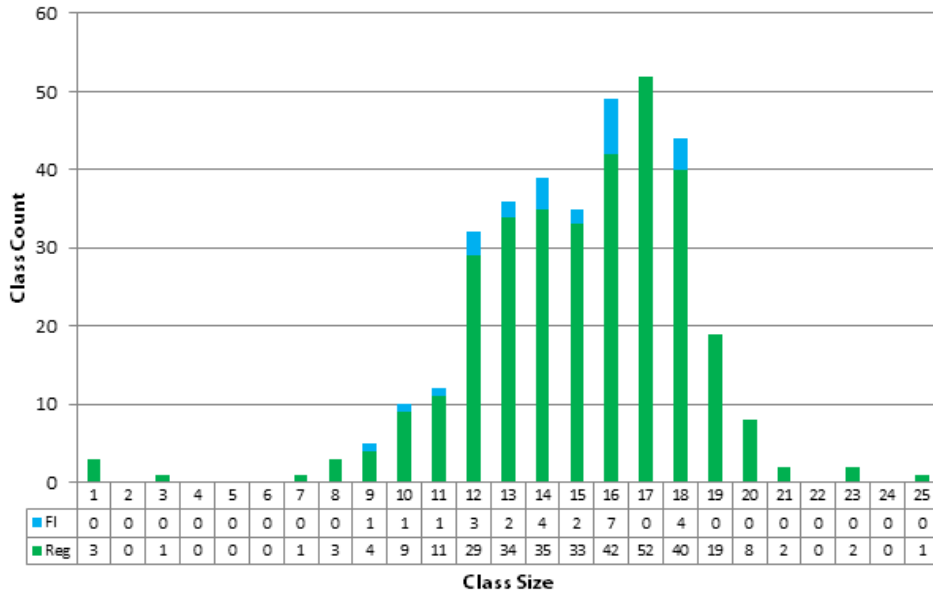


High Impact Schools



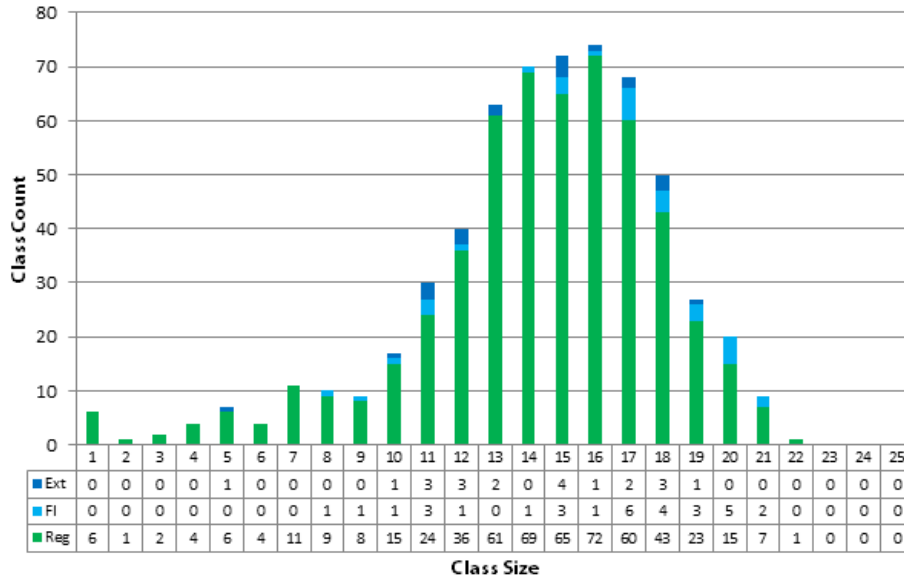
High Impact Schools

Count of Classes by Class Size - Gr 1-3 -
October 2, 2020*



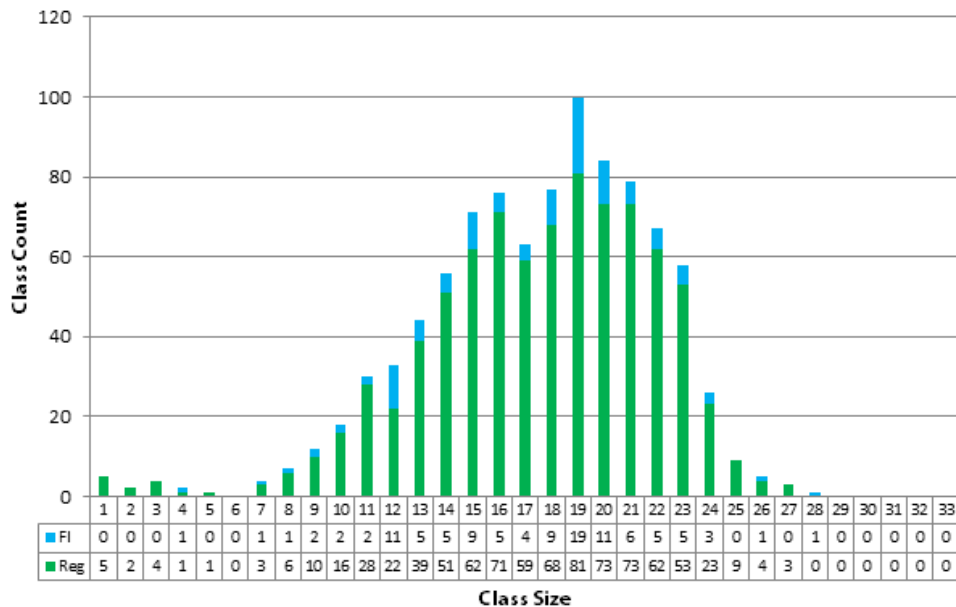
High Impact Schools

Count of Classes by Class Size - Gr 4-8 -
October 2, 2020*



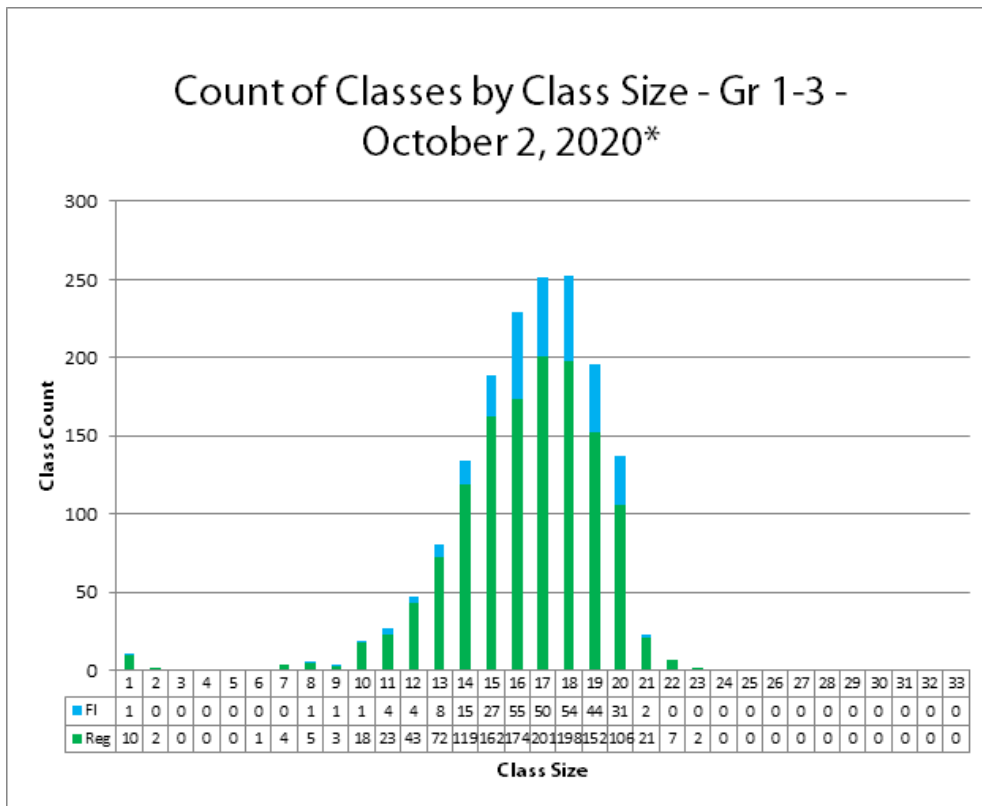
All Other Schools

Count of Classes by Class Size - FDK -
October 2, 2020



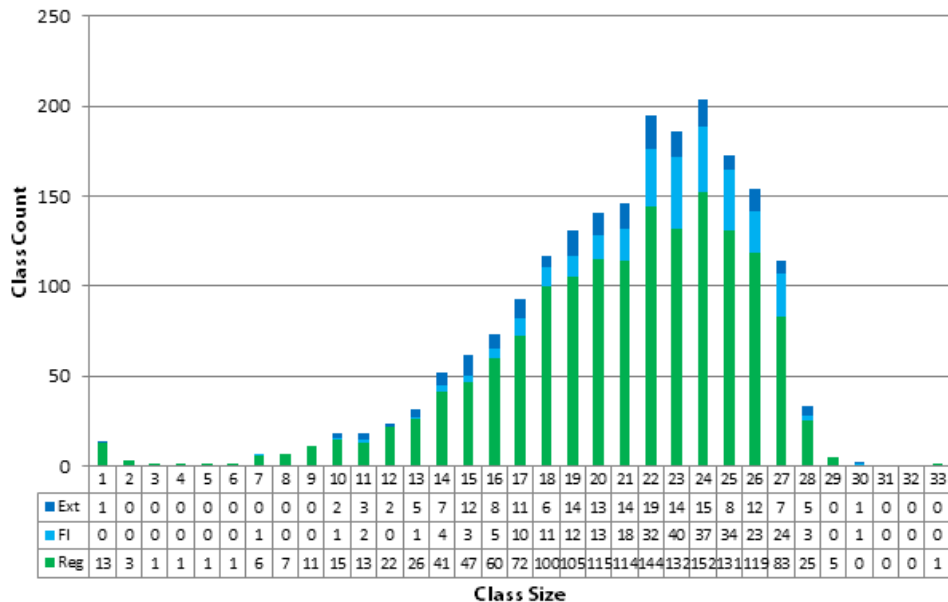
All Other Schools

Count of Classes by Class Size - Gr 1-3 -
October 2, 2020*



All Other Schools

Count of Classes by Class Size - Gr 4-8 -
October 2, 2020*



Mask Exemptions

- [Mask Guidelines](#) (updated September 24, 2020)
- Now “COVID-19 Mask Procedure (PR730)”

Features:

- Mask Exemption and Procedure
- Greater priority on health and safety
- new Appendix C - human rights accommodation detailed guidance

Public Health Nurses/Custodians

- TPH has hired an additional 70 nurses to support schools. Each is supporting between 10 to 15 schools. (Not employees of TDSB)
- As part of the plan to provide enhanced cleaning of high touch surfaces, the Board committed to hiring an additional 224.5 FTE caretaking staff
- To date, the Board has hired 100 additional part time cleaners

HEPA Filters

- On further consideration, the Board is currently looking to source HEPA filters for classrooms with no mechanical ventilation
- Will be allocated to Q5 schools first and then to other schools as resources allow

In-Person School and Virtual School

- Elementary
 - In-Person: 109, 060 students
 - Virtual School: 58, 526 students
 - Virtual School Teachers: 2, 266
- Secondary
 - In-Person: 52, 469 students
 - Virtual School: 17, 970 students
 - Virtual School Teachers: 770

Virtual School Students

Virtual School by Learning Centres:

- LC1 -- 12, 274
- LC2 -- 16, 285
- LC3 -- 18, 816
- LC4 -- 11, 151

Special Education September 30th

Moving from In-Person to Virtual School

- 7,882 students moving to Virtual School
- 7,261 students in Regular Class
 - 1,231 students in Regular Class with IEPs (e.g., Indirect Support, Resource Assistance or Withdrawal Assistance)
- 33 students in an ISP

Moving from In-Person to Virtual School

LC1

- Regular Class with IEP (Resource): **271**
- ISP: Developmental Disability (15), Physical Disability (3): **18**

LC2

- Regular Class with IEP (Resource): **373**
- ISP: **0**

LC3

- Regular Class with IEP (Resource): **405**
- ISP: Physical Disability: **3**

LC4

- Regular Class with IEP (Resource): **182**
- ISP: Developmental Disability (11), Giftedness (1): **12**

Special Education September 30th

Moving from Virtual to In-Person School

- 2,921 students moving to In-Person School
- 2,457 students in Regular Class
 - 379 students in Regular Class have IEPs (e.g., Indirect Support, Resource Assistance or Withdrawal Assistance)
- 142 students are in an ISP

Moving from Virtual to In-Person School

LC1

- Regular Class with IEP (Resource): **271**
- ISP: ASD (3), BEH (3), DK (2), MID (8), DD (9), LD (4) Gifted (3), HSP (9): **41**

LC2

- Regular Class with IEP (Resource): **373**
- ISP: ASD (6), BEH (2), DK (1), MID (5), DD (7), LD (1) Gifted (6), HSP (15): **43**

LC3

- Regular Class with IEP (Resource): **405**
- ISP: BEH (2), DK (1), MID (4), DD (8), LD (4) Gifted (8), HSP (7): **33**

LC4

- Regular Class with IEP (Resource): **80**
- ISP: ASD (1), BEH (2), MID (2), DD (3), LD (2) Gifted (7), HSP (8): **25**

Virtual School Special Education Staffing and Creating Classes

- Teachers placed in a Virtual School ISP or HSP/Resource have Special Education Qualifications Part 1, Part 2 or Specialist
- Students have been placed in classes based on several factors such as:
 - grade
 - special education program
 - ISP classes from the in-person school

Virtual School

Special Education Support

- Wendy Roberts, Principal - Special Education Secondary Virtual School
- Mary Jane McNamara -Special Education Elementary Virtual School
- Janine Small, Centrally Assigned Principal Special Education supporting both Virtual (Elementary and Secondary) and In-Person Schools

Virtual School

Special Education Support

- Special Education CAPs
 - supporting Elementary and Secondary Virtual School staffing allocations
 - timetabling, creating classes to support ISP and HSP/Resource
 - work in collaboration with Virtual School Principals
 - ECPP CAP ensuring students in ECPP are also being supported virtually and in-person

Virtual School

Special Education Support

LC 1 Kim Pividor

Wendy Terro

LC 2 Anastasia Poulis

Ruth Bell

LC 3 David Hawker-Budlovsky

Rita Gallippi

LC 4 Alison Gaymes San Vicente

Karen Murray

Virtual School

Special Education Support

- Special Education Consultants & Coordinators
 - will support students in both in-person and VS
 - providing professional learning for our VS teachers with ISP or Resource
 - students in virtual school continue to be supported by staff in each learning network
 - will continue to process, participate and provide student support through SSTs and IPRCs

Virtual School

Special Education Program Support

- Each Special Education CAP and Consultants/Coordinators are working to reach out to VS Special Education Teachers and Support Staff to create learning networks based on the needs of students
- the focus is on setting up the learning space, early assessments and IEP development



GOOD MORNING, FABULOUS STUDENTS!

Today's Schedule

9:00am Community
Circle

The Terry Fox
Story

Assessments and
Intake Meetings
continue

Janine, when is
your birthday?

Class starts in...

5:00



Question/Challenge of the
Day: Terry Fox set goals
every day.

what will yours be?



The Joke of the Day!!!

What do you call an
alligator detective?

An investi-gator



Materials You'll Need:

- Device
- Smiles
- Voices

Virtual School IEP Data

Elementary - 9,186 IEPs

Secondary - 4,502 IEPs

*this number will change based on Transition Periods

IEP Process for Virtual Schools

- Students with IEPs in the Virtual School will be supported by their OSR school principal (accommodations, modifications, reviewing and signing)
- The IEP Parent Consultation form has been sent using the TDSB Qualtrics platform; follows the TDSB Notice of Consent
- By the end of October, full IEPs are planned to be sent to families virtually (FOI protected)

IEP Process for Virtual Schools

- The IEPs is a working document which is developed in collaboration with parents ; due to the varying start dates of students, completion dates may vary
- Oct 2, 2020 Ministry document, *Guidance on Assessment, Evaluation and Reporting:*

Per O. Reg. 181/98, the principal is to ensure that an IEP is completed within 30 days of the placement of the student in a program. It's also important to note though that the IEP is intended to be a working document that is reviewed and adjusted as needed. Given the current environment, we're encouraging boards, schools, parents and students to be flexible and work together to consider the timing of IEP reviews and whether updates are needed, keeping the best interest of the student at the centre of decision-making.

IST/SST and IPRC/SEPRC

To ensure the student and family stay connected to their homeschool:

- The OSR Principal will oversee all IST/SST and IPRC/SEPRC for their respective students in both VS and in bricks and mortar
- Meetings will be held virtually and using an AODA platform.
- VS Staff can access Regional Support

CCAT 7

Due to the current pandemic, the September 2020-2021 school start-up has impacted CCAT7 testing that typically was administered in September.

In-Person School – 11,467 students in Grade 3

Virtual School - 6,291 students in Grade 3

As of September 30, 2020

CCAT 7 Considerations

- Logistics
- Health and Safety of students and staff
- Discussion

SEAC Discussion

CCAT 7 2020-2021



Agenda (Continued)

6. Trustee's Report(s) /Introductions
 - PSSC
7. SEAC Member Reports
8. Working Groups - Sign up
 - Budget/Communication/Sp. Ed. Plan
9. Other Business
 - 10.1 Parents As Partners Conference Workshops
 - 10.3 Correspondence -Durham District School Board SEAC email Sept.23
10. Adjournment. Next Meeting: November 2, 2020 @ 7pm