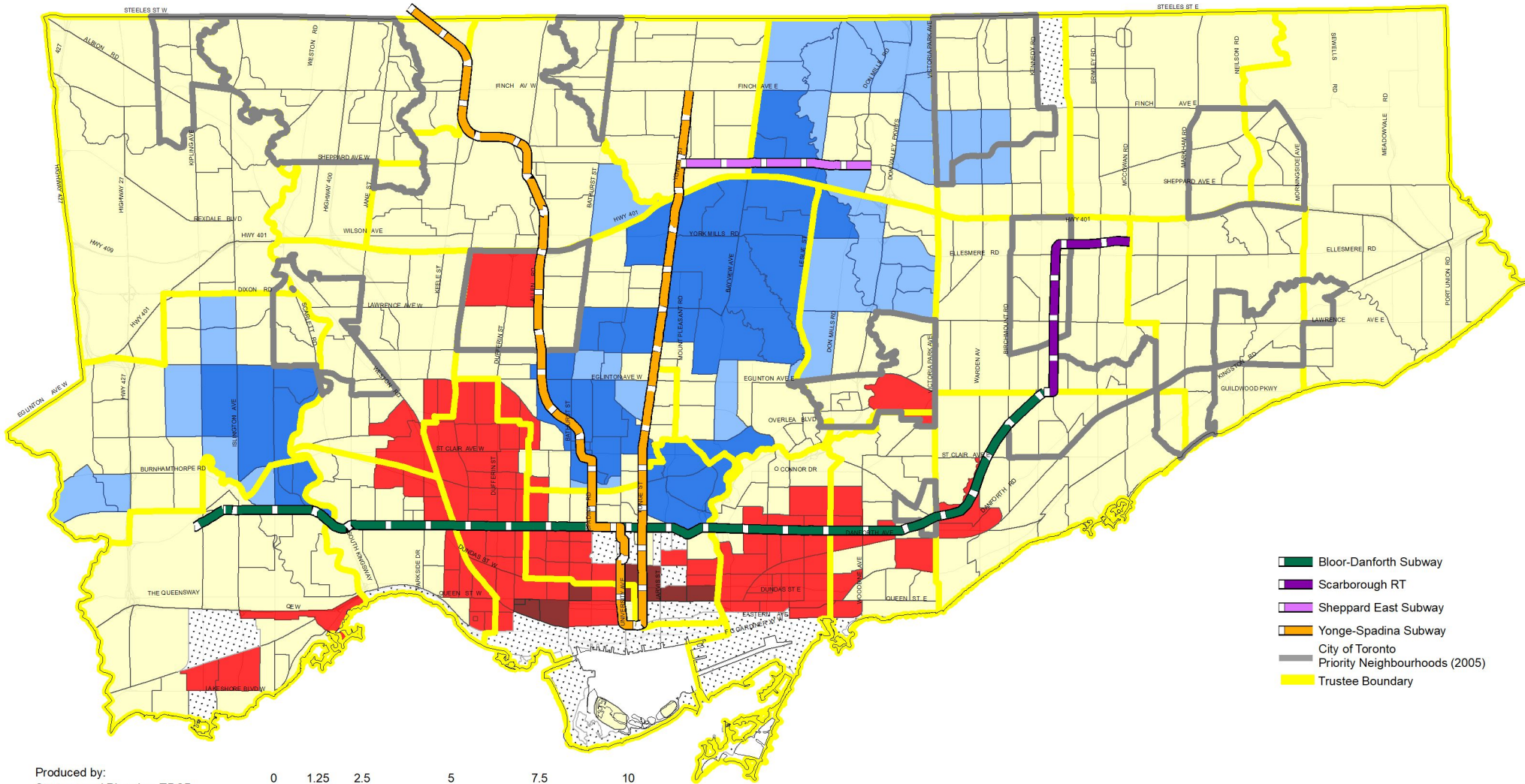


TAB 9

Maps of “The Three Cities
Within Toronto”,
J. David Hulchanski

Blank Page

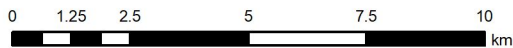




- Bloor-Danforth Subway
- Scarborough RT
- Sheppard East Subway
- Yonge-Spadina Subway
- City of Toronto
- Priority Neighbourhoods (2005)
- Trustee Boundary

Produced by:
Strategy and Planning, TDSB
November 2019

Source:
Base Map- Geospatial Competency Centre
Facility - Strategy and Planning, TDSB
Data- City of Toronto
The Three Cities Within Toronto, Hutchanski, UoF

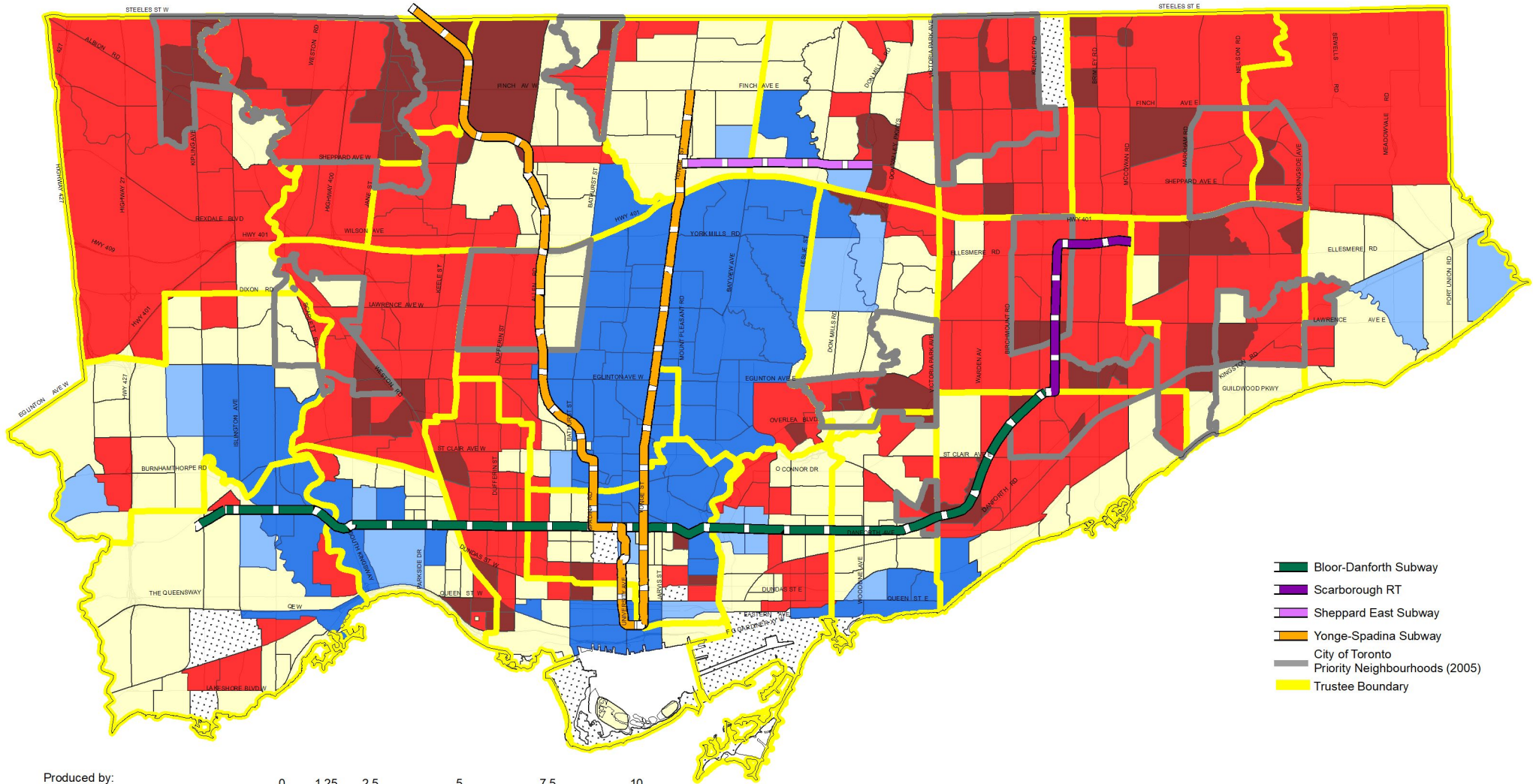


Census Tract Average Individual Income Relative to the Toronto CMA Average of \$30,800 * (estimated to 2001 census boundaries)

Very High	High	Middle	Low	Very Low	No Data
More than 40% Above 36 Tracts, 7% of City Average = \$54,700*	20% to 40% Above 41 Tracts, 8% of City Average = \$39,000*	20% Below to 20% Above 341 Tracts, 66% of City Average = \$29,800*	20% to 40% Below 91 Tracts, 18% of City Average = \$23,300*	More than 40% Below 6 Tracts, 1% of City Average = \$17,000*	

* Average incomes in constant 2005 dollars

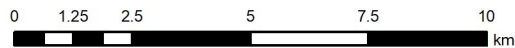
L:TDSB/B01/Capital Priorities 2019/GIS/P20191105ThreeCities .mxd



- Bloor-Danforth Subway
- Scarborough RT
- Sheppard East Subway
- Yonge-Spadina Subway
- City of Toronto
- Priority Neighbourhoods (2005)
- Trustee Boundary

Produced by:
Strategy and Planning, TDSB
November 2019

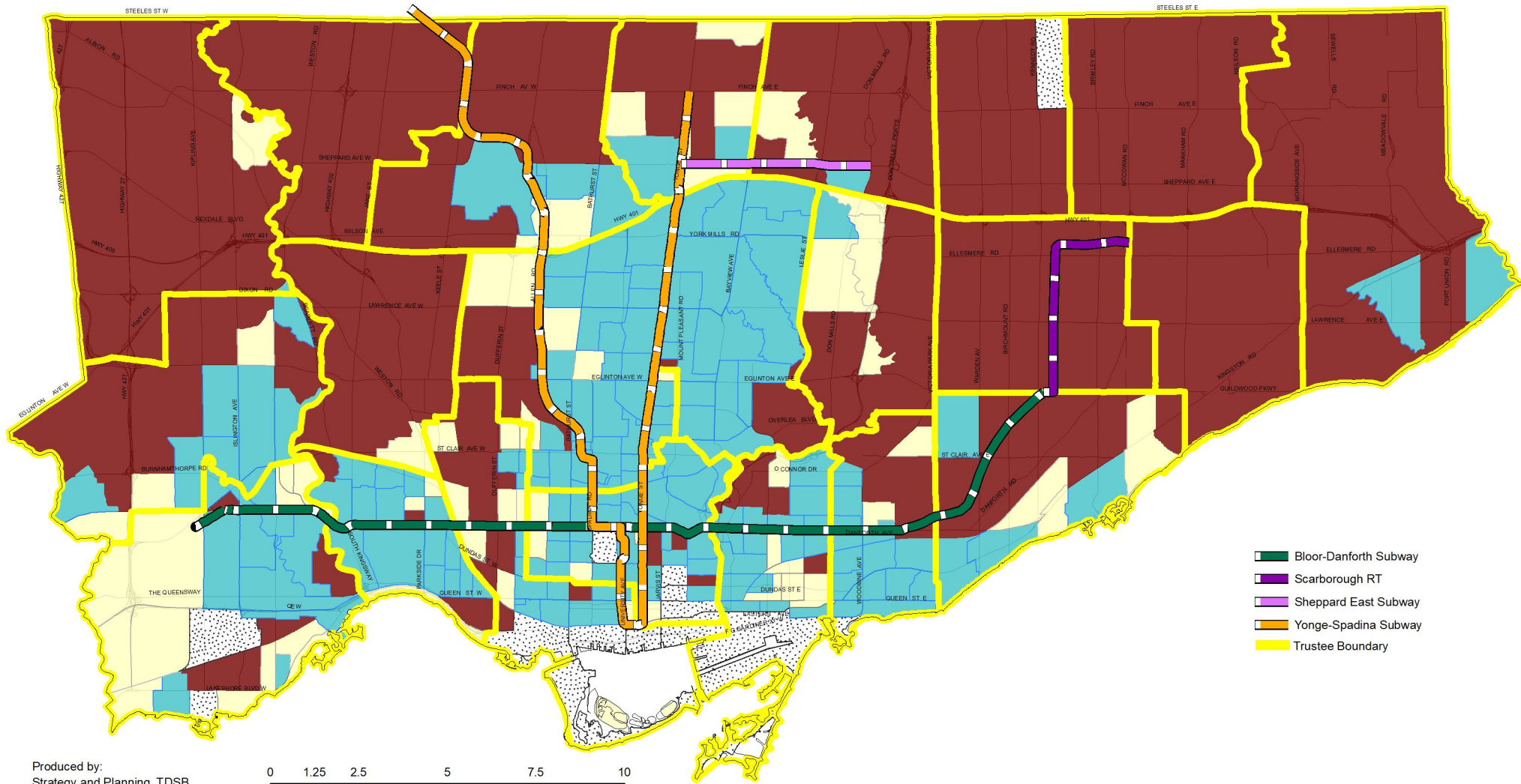
Source:
Base Map- Geospatial Competency Centre
Facility - Strategy and Planning, TDSB
Data- City of Toronto
The Three Cities Within Toronto, Hutchanski, UoT



Census Tract Average Individual Income Relative to the Toronto CMA Average of \$30,800 * (estimated to 2001 census boundaries)

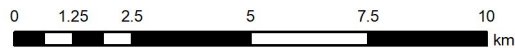
Very High	High	Middle	Low	Very Low	No Data
More than 40% Above 76 Tracts 15% of City Average = \$104,000	20% to 40% Above 21 Tracts, 4% of City Average = \$53,000	20% Below to 20% Above 152 Tracts, 29% of City Average = \$39,000	20% to 40% Below 206 Tracts, 40% of City Average = \$28,000	More than 40% Below 67 Tracts, 14% of City Average = \$22,500	

L:TDSB/B01/Capital Priorities 2019/GIS/P20191105ThreeCities .mxd

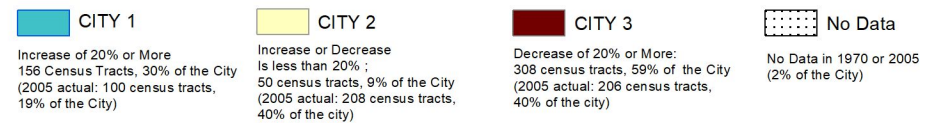


- Bloor-Danforth Subway
- Scarborough RT
- Sheppard East Subway
- Yonge-Spadina Subway
- Trustee Boundary

Produced by:
Strategy and Planning, TDSB
November 2019
Source:
Base Map- Geospatial Competency Centre
Facility - Strategy and Planning, TDSB
Data- City of Toronto
The Three Cities Within Toronto, Hutchanski, UoT



Change in the Census Tract Average Individual Income as a Percentage of the Toronto CMA Average, 1970-2005



L:TDSB/B01/Capital Priorities 2019/GIS/P20191105ThreeCities.mxd

Blank Page

